

Earth, Planets and Space

An Open Access Journal

Yasuo Ogawa (Editor in Chief, *EPS*)



5 Supporting Societies



The Society of Geomagnetism and Earth, Planetary and Space Sciences



The Seismological Society of Japan



The Volcanological Society of Japan



The Geodetic Society of Japan

The Geodetic Society of Japan



The Japanese Society for Planetary Sciences

Journal Scope

Geosciences covered the five supporting societies

- Geomagnetism
- Aeronomy
- Space Science
- Seismology
- Volcanology
- Geodesy
- Planetary Sciences

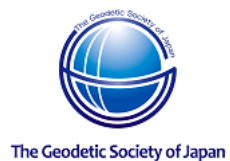
History of *EPS*

Two journals merged as *EPS* in 1998

JGG (Journal of Geomagnetism and Geoelectricity) 1949-



JPE (Journal of Physics of the Earth) 1952-



The Japanese Society for Planetary Sciences joined.



Open Access publication since 2014

* Springer Open platform

Current volume number : 69

Editorial Board

expanded in 2016

Editor-in-Chief

Yasuo Ogawa Tokyo Institute of Technology, Japan

Vice Editor-in-Chief (Solid Earth Science)

Masato Furuya Hokkaido University, Japan

Vice Editor-in-Chief (Space Science)

Nozomu Nishitani Nagoya University, Japan

Editors(41)

Japan (24)

Asia (4) : Taiwan(2), China(1), Singapore(1)

Oceania (3): Australia(1) NZ(2)

Europe (7): Germany(1), Switzerland(1), France(1), Italy(1), Sweden(1), Austria(1), UK(1)

North America (3)

4 Article Types

1. Full paper
2. *Express Letter*
($<5,000$ words, max 5 (figs+tbls)) ... **NEW**...
3. Frontier Letter (invited letter)
4. Technical report
 - Instrument design
 - Software design

Special Issues

- In fact, we have no issues.
- * **Thematic collections as links**
 - * Geo-Events (Volcano eruptions, Earthquakes)
 - * Project achievements including technical reports

- 2014: 5 issues organized
- 2015: 8 issues
- 2016: 7 issues
- 2017: 4 issues organized
 - Towards forecasting phreatic eruptions: Examples from **Hakone volcano** and some global equivalents
 - GNSS and SAR Technologies for **Atmospheric Sensing**
 - Akatsuki at **Venus**: The First Year of Scientific Operation
 - Advancement of our knowledge on **Aso volcano**: Current activity and background
 - More to come

Merits of Publication in *EPS*

- * Solid Background of Five Societies
- * Qualified review
- * Quick review process (in particular, *Express Letters*) ...in progress
- * Increasing Impact Factor
- * Open access publication with ***inexpensive APC***
- * Special issue
- * Awards

Article type	Member	Non-member
Express Letters	360 Euros	540
Others	540	900

Statistics

Terra Pub

SpringerOpen

2011

2012

2013

2014

2015

2016

2017

IF

0.795

2.921

3.056

1.328

1.871

(2.062)

CiteScore

1.02

2.08

2.65

2.23

1.66

1.78

submissions

169

176

279

366

363

286

publications

132

165

163

148

200

196

Months
Submission
to acceptance
(Total)

7.84

7.78

5.03

5.99

5.89

5.68

(Letter)

5.88

6.52

5.42

**(Express
Letter)**

2.12

Volume 63, Issue 7, July 2011

First Results of the 2011 Off the Pacific Coast of Tohoku Earthquake

ISSN: 1880-5981 (Online)

In this issue (71 articles)

◀ Page 1 of 4 ▶

Letter

Preface

Hiroo Kanamori, Kiyoshi Yomogida

» [Download PDF](#) (402KB)

» [View Article](#)

	Citations in 5 yrs
Fujii et al.	189
Lay at al.	143
Shao et al.	120
Ammon et al.	109
Maeda et al.	109

As of Sept 16, 2016



Successful special issue

Published 4 month after the Tohoku 2011 EQ

Statistics

Terra Pub

SpringerOpen

2011

2012

2013

2014

2015

2016

2017

IF

0.795

2.921

3.056

1.328

1.871

(2.062)

CiteScore

1.02

2.08

2.65

2.23

1.66

1.78

submissions

169

176

279

366

363

286

publications

132

165

163

148

200

196

Months
Submission
to acceptance
(Total)

7.84

7.78

5.03

5.99

5.89

5.68

(Letter)

5.88

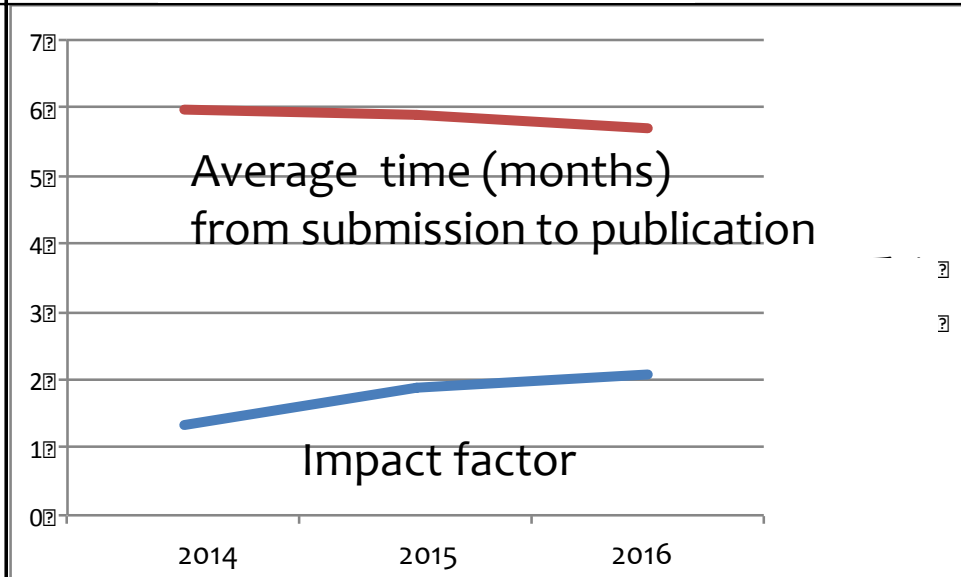
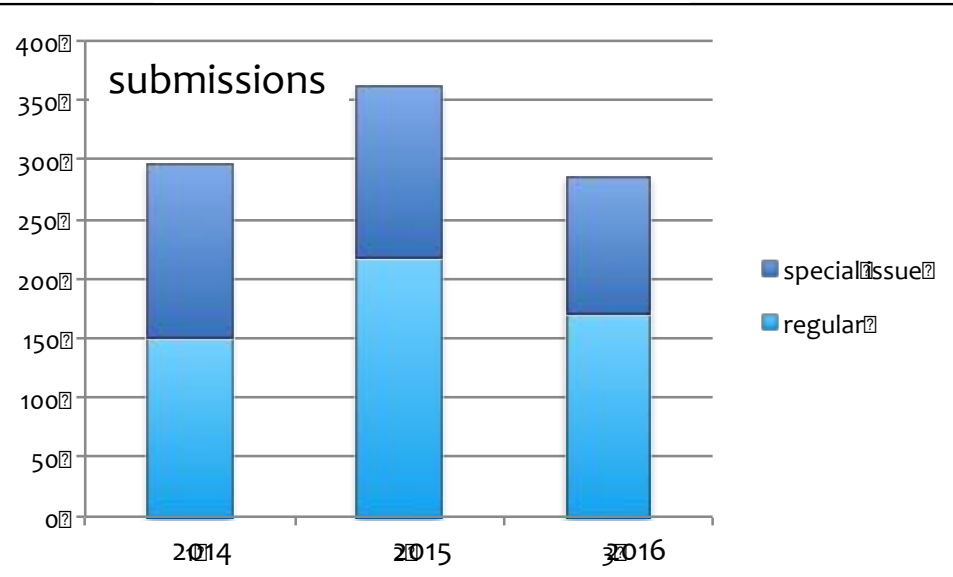
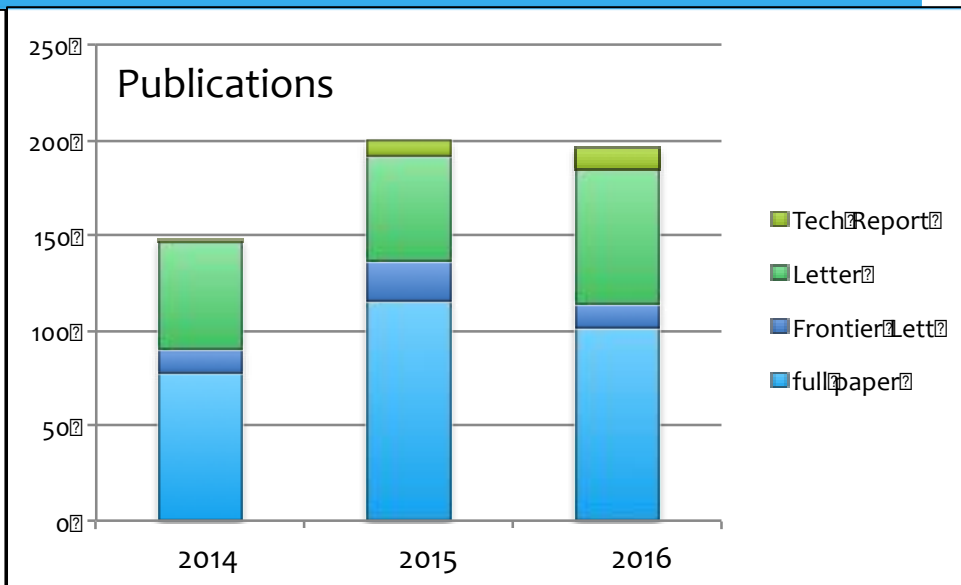
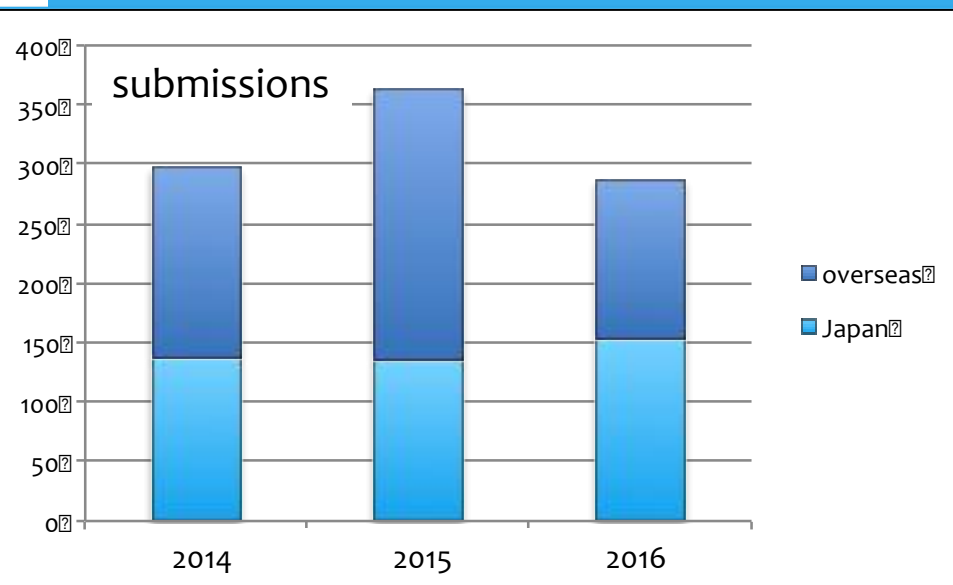
6.52

5.42

(Express
Letter)

2.12

Recent Statistics



Citing articles

EPS papers published in 2015-2016

- * EARTH PLANETS AND SPACE
- * JOURNAL OF GEOPHYSICAL RESEARCH SPACE PHYSICS
- * GEOPHYSICAL RESEARCH LETTERS
- * JOURNAL OF GEOPHYSICAL RESEARCH SOLID EARTH
- * EARTH AND PLANETARY SCIENCE LETTERS
- * SPACE WEATHER
- * ADVANCES IN SPACE RESEARCH
- * SPACE SCIENCE REVIEWS
- * GEOPHYSICAL JOURNAL INTERNATIONAL
- * ASTROPHYSICAL JOURNAL
- * GEOCHEMISTRY GEOPHYSICS GEOSYSTEMS
- * SCIENTIFIC REPORTS

Top authors

EPS papers published in 2015-2016

- * FINLAY CC (14)
- * OLSEN N (12)
- * THEBAULT E (9)
- * STOLLE C (9)
- * LUHR H (9)
- * **SHIOKAWA K (8)**
- * **MIYAKE H (8)**
- * KORTE M (8)
- * **KATAOKA R (8)**

EPS Steering Committee

Members

- * 10 Members from 5 societies, chaired by Kiyoshi Baba

Functions

1. Financing

- * Support from the 5 societies & JSPS

2. Advertisements

- * Booth at conferences (JPGU, AOGS, AGU. EGU)
- * Societies' EPS web pages
- * Social media
 - * Facebook
 - * Blog

Society web page

www.earth-planets-space.org
More flexible web than Springer's

Earth, Planets and Space

About EPS Board Members Submit Manuscript Special Issues Awards Contact Blog EN



View the journal

About EPS

The **Earth, Planets and Space (EPS)** publishes original articles on earth and planetary sciences, particularly geomagnetism, aeronomy, space science, seismology, volcanology, geodesy, and planetary science. We also welcome articles on new and interdisciplinary subjects, including instrumentation. [Read more](#)

Impact Factor (2015): 1.871

5-Yr Impact Factor (2015): 2.038

Editorial Board

Editor-in-Chief

Yasuo Ogawa

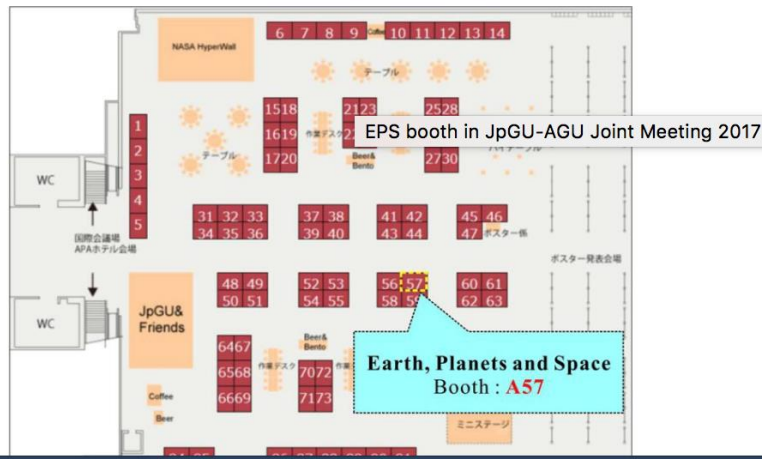
Tokyo Institute of
Technology



See members of the Editorial Committee

Blog

Event



Read EPS Articles

Submit Your Paper

Latest paper

Popular articles

LETTER

Effects of subsurface structures of source regions on long-period ground motions observed in the Tokyo Bay area, Japan

Tomichi Uetake

EPS Booth at conferences



Advertisement @ EGU 2017

Survey



Awards

1. EPS Excellent Paper Award (2016~) ... **NEW...**
 - * One paper in the previous 5 years
 2. EPS Young Researcher Award (2003~)
 - * 35 yrs old or younger at the submission
 3. Excellent Reviewers (2013~)
1. Highlighted Papers (2007~)

EPS Young Researcher Award 2016

Dr. Michiyo Sawai

LETTER

Open Access

Frictional properties of incoming pelagic sediments at the Japan Trench: implications for large slip at a shallow plate boundary during the 2011 Tohoku earthquake

Michiyo Sawai^{1*}, Takehiro Hirose^{1,2} and Jun Kameda³



EPS Excellent Paper Award 2016

LETTER

Earth Planets Space, **63**, 815–820, 2011

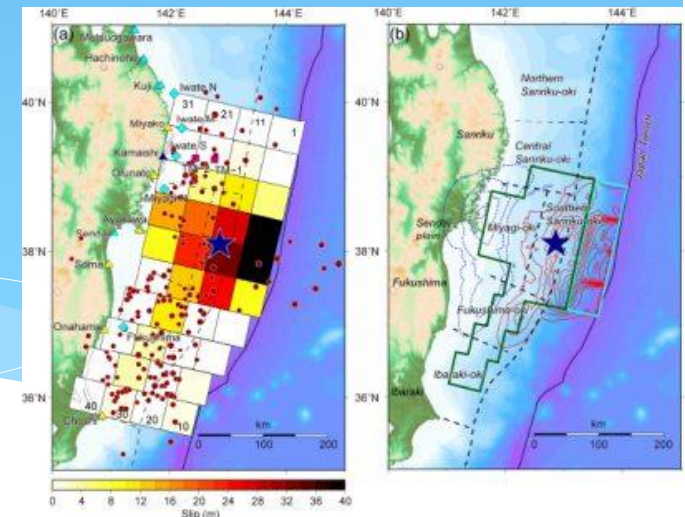
Tsunami source of the 2011 off the Pacific coast of Tohoku Earthquake

Yushiro Fujii¹, Kenji Satake², Shin'ichi Sakai², Masanao Shinohara², and Toshihiko Kanazawa²

¹*International Institute of Seismology and Earthquake Engineering (IISEE), Building Research Institute (BRI), 1-3 Tachihara, Tsukuba, Ibaraki 305-0802, Japan*

²*Earthquake Research Institute (ERI), University of Tokyo, 1-1-1 Yayoi, Bunkyo-ku, Tokyo 113-0032, Japan*

(Received April 9, 2011; Revised June 6, 2011; Accepted June 7, 2011; Online published September 27, 2011)



Future plan

- * *Long-Term strategy committee* established in 2016
- * JSPS funding ends in FY 2017
 - ➔ Increase support from the five Societies
 - Or
 - ➔ Decrease support for APC
- * Towards more collaboration with JpGU / PEPS
 - ➔ Expand Journal Scope as a JpGU Letter Journal ?
 - Or
 - ➔ Become one of the Letter journals in JpGU?

Earth, Planets and Space

An Open Access Journal

Yasuo Ogawa (Editor in Chief, *EPS*)

